



ERRINGTON METALS
TSXV:EM

HIGH-GRADE COPPER, ZINC & PRECIOUS METALS

Sudbury's Untapped VMS Potential

Corporate Presentation
May 2026

erringtonmetals.com





Cautionary Statement

The information provided in this presentation (this "**Presentation**") is not to be construed as an offer to sell or a solicitation to buy any securities of Errington Metals Inc. ("**Errington**" or the "**Company**") or represent an intention to induce any person to make an investment in Errington or to assist any person in the making of an investment decision. This Presentation is for informational purposes only and is not, and under no circumstances is to be construed as, a public offering, prospectus, offering memorandum or advertisement of securities, nor is this Presentation intended to provide financial, tax, legal or accounting advice.

This Presentation contains confidential and proprietary information about Errington and its business and operations, including with respect to its Sudbury Basin Project. By accepting or reviewing this Presentation, you acknowledge and agree that: (i) all information contained herein is being provided to you on a strictly confidential basis; (ii) you will maintain the confidentiality of all such information, including in accordance with any existing confidentiality obligations owed by you or your affiliates to Errington; and (iii) you will not reproduce, distribute, disclose or otherwise use any portion of the information contained herein without Errington's prior written consent. Upon Errington's request, you shall promptly return or destroy all materials received from Errington, including this Presentation, and confirm that no copies (in any form) have been retained or distributed. These obligations apply to all written and oral communications made available to you by or on behalf of Errington.

This Presentation includes information about Errington and certain other issuers that Errington has obtained from publicly available sources. Although Errington believes this information to be reliable, it has not independently verified any of the data or other statistical information contained therein, nor has it ascertained or validated the underlying economic or other assumptions relied upon by these sources. Errington has no intention and undertakes no obligation to update or revise any such information or data, whether as a result of new information, future events or otherwise, except as, and to the extent required by applicable securities laws.

This Presentation is not, and is not intended to be, an advertisement, prospectus or offering memorandum, and is made available on the express understanding that it does not contain all information that may be required to evaluate and will not be used by readers in connection with, the purchase of or investment in any securities of any entity. This Presentation accordingly should not be treated as giving investment advice and is not intended to form the basis of any investment decision. It does not, and is not intended to, constitute or form part of, and should not be construed as, any recommendation or commitment by Errington or any of its directors, officers, employees, direct or indirect shareholders, agents, affiliates, advisors or any other person, or as an offer or invitation for the sale or purchase of, or a solicitation of an offer to purchase, subscribe for or otherwise acquire, any securities, businesses and/or assets of any entity, nor shall it or any part of it be relied upon in connection with or act as any inducement to enter into any contract or commitment or investment decision whatsoever. Readers should not construe the contents of this presentation as legal, tax, regulatory, financial or accounting advice and are urged to consult with their own advisers in relation to such matters.

This Presentation does not purport to be comprehensive or to contain all the information that a recipient may need in order to evaluate the Company. No representation or warranty, express or implied, is given and, so far as is permitted by law, no responsibility or liability is accepted by any person, with respect to the accuracy, fairness or completeness of the Presentation or its contents or any oral or written communication in connection with the transactions described herein. In particular, but without limitation, no representation or warranty is given as to the achievement or reasonableness of, and no reliance should be placed for any purpose whatsoever on any projections, targets, estimates or forecasts or any other information contained in this Presentation. In providing this Presentation, the Company does not undertake any obligation to provide any additional information or to update or keep current the information contained in this Presentation or any additional information or to correct any inaccuracies which may become apparent.

CAUTIONARY NOTE REGARDING FORWARD-LOOKING INFORMATION

This Presentation contains forward-looking information and forward-looking statements (collectively, "**forward-looking statement**") within the meaning of applicable Canadian securities legislation. All statements, other than statements of historical fact, are forward-looking statements and are based on expectations, estimates and projections as of March 31, 2026. Any statement that involves discussions with respect to predictions, expectations, plans, projections, future events or performance, often but not always using words such as "believe", "expect", "is expected", "intend", "should", "seek", "anticipate", "will", "positioned", "project", "risk", "plan", "may", "estimate" or variations of such words and phrases or stating that certain actions, events or results "may" or "could", "would", "might" or "will" or, in each case, their negative and words of similar meaning are not statements of historical fact and may be forward-looking statements. In this presentation, these forward-looking statements relate, among other things, to statements regarding the timing and ability of Errington to complete a listing of the common shares of the Company on the TSX Venture Exchange; exploration and drilling programs, including the timing, completion and results thereof, expectations regarding the future business and operations of Errington; expectations regarding mine optimizations opportunities at the Sudbury Basin Project; the timing and success of exploration, development and metallurgical testing activities; the timing, extent and success of mining operations (if any); project development and related permitting; the results of exploration programs; the results of economic analyses (including the results of the Sudbury Basin Technical Report (as defined herein)); the ability to complete initial mineral resources estimates; opportunities for growth of mineral projects; estimates of zinc, copper, gold, silver and lead prices; the ability to adapt to changes in zinc, copper, gold, silver and lead prices; estimates of costs; and estimates of planned exploration and development expenditures and estimates of mine development and construction.

All forward-looking statements involve various risks, assumptions, estimates and uncertainties that are based on current expectations and actual results may differ materially from those contained in such information. These risks, assumptions, estimates and uncertainties could adversely affect the outcome and financial effects of the plans and events described herein. Even if the outcome and financial effects of the plans and events described herein are consistent with the



Cautionary Statement continued

forward-looking information contained in this Presentation, those results or developments may not be indicative of results or developments in subsequent periods. These risks and uncertainties include, but are not limited to, risks relating to: the ability of Errington to complete further exploration activities, including drilling; Errington's interest in and title to the Sudbury Basin Project; the ability of exploration activities to accurately predict mineralization; errors in management's geological and financial modeling; the ability of Errington to maintain all current permits; the ability of Errington to obtain any additional approvals and complete additional transactions; the ability of Errington to execute on its drilling and exploration program; the ability of Errington to secure the necessary contractors in a timely fashion; the legislative and regulatory environments; the impact of competition and the competitive response to Errington's business strategy; the timing and amount of capital and other expenditures; conditions in financial markets and the economy generally; the ability of Errington to obtain additional financing on satisfactory terms or at all; the ability of management of Errington to operate and grow Errington's business effectively; fluctuations in metal prices; and the speculative nature of mineral exploration and development.

Forward-looking statements and information involve significant risks and uncertainties, should not be read as guarantees of future performance or results and will not necessarily be accurate indicators of whether or not such results will be achieved. These uncertainties and risks include, but are not limited to, fluctuations in spot and forward prices of zinc, copper, gold, silver and lead or certain other commodities; fluctuations in currency markets (such as the Canadian dollar to United States dollar exchange rate); change in national and local government, legislation, taxation, controls, regulations and political or economic developments (including the potential impacts of tariffs and changing governmental policy relating to global trade); risks and hazards associated with the business of mineral exploration, development and mining (including environmental hazards, industrial accidents, unusual or unexpected formations pressures, cave-ins and flooding); inability to obtain adequate insurance to cover risks and hazards; the presence of laws and regulations that may impose restrictions on mining; employee relations; relationships with and claims by local communities and indigenous populations; availability of increasing costs associated with mining inputs and labour; the speculative nature of mineral exploration and development (including the risks of obtaining necessary licenses, permits and approvals from government authorities); and title to properties. Readers should not place undue reliance on any forward-looking statement and information contained in this Presentation. Except as required by law, Errington assumes no obligation to update the forward-looking statements of beliefs, opinions, projections, or other factors, should they change.

CAUTIONARY NOTE FOR US INVESTORS

The securities of Errington have not been and will not be registered under the *United States Securities Act of 1933*, as amended (the "**U.S. Securities Act**") or any state securities laws and may not be offered and sold within the United States (as defined in Regulation S under the U.S. Securities Act) except pursuant to an exemption from the registration requirements of the U.S. Securities Act. This Presentation shall not constitute an offer to sell or a solicitation of an offer to buy any securities in the United States or in any other jurisdiction, and no securities may be offered or sold without registration under the U.S. Securities Act and all applicable state securities laws or compliance with the requirements of an exemption from such registration.

SCIENTIFIC AND TECHNICAL INFORMATION

The scientific and technical information in this Presentation relating to the Sudbury Basin Project is supported by a technical report entitled "Technical Report – Sudbury Basin Project" dated April 2, 2026 (with an effective date of December 31, 2026) (the "Technical Report"), which was prepared, reviewed and approved by Ryan Wilson, P. Geo.; and David Frost. Each author of the Technical Report is a "qualified person" within the meaning of National Instrument 43-101 - Standards of Disclosure for Mineral Projects ("NI 43-101") and is considered to be "independent" of Errington for purposes of Section 1.5 of NI 43-101. References in this presentation to the Technical Report should be not construed as depicting the complete findings of the entire Technical Report.

MINERAL RESOURCES AND MINERAL RESERVES

The historical estimates contained in this Presentation have not been verified as current mineral resources. A "qualified person" (as defined in NI 43-101) has not done sufficient work to classify the historical estimates as current mineral resources or mineral reserves and the Company is not treating the historical estimates as current mineral resources or mineral reserves.

QUALIFIED PERSONS

Frank Santaguida, P. Geo, Vice President, Exploration of Errington, is a "qualified person" for purposes of NI 43-101 and has reviewed and approved all of the scientific and technical information contained in this Presentation.

CURRENCY

All dollar amounts are in C\$ unless otherwise noted.



Introduction to Errington Metals

Polymetallic VMS Explorer

New polymetallic VMS explorer focused in Sudbury, ON, a globally recognized mining camp

Strong Shareholder Base

Strong shareholder base, including high insider ownership and 19.9% strategic position held by Glencore

Exploration Upside

Substantial exploration upside throughout the property

Proven Management Team

Proven management team with deep experience in the region

Access to Workforce

Year-round access and local, skilled workforce alongside a knowledgeable and supportive community



Please see Disclaimer for notes and forward-looking statements



The Errington Advantage

VMS Potential

VMS potential of the Sudbury Basin has been largely overlooked in favour of Copper-Nickel-PGE deposits

Mineralized Centres

Three mineralized centres identified across a 12.5km strike length

Expansion

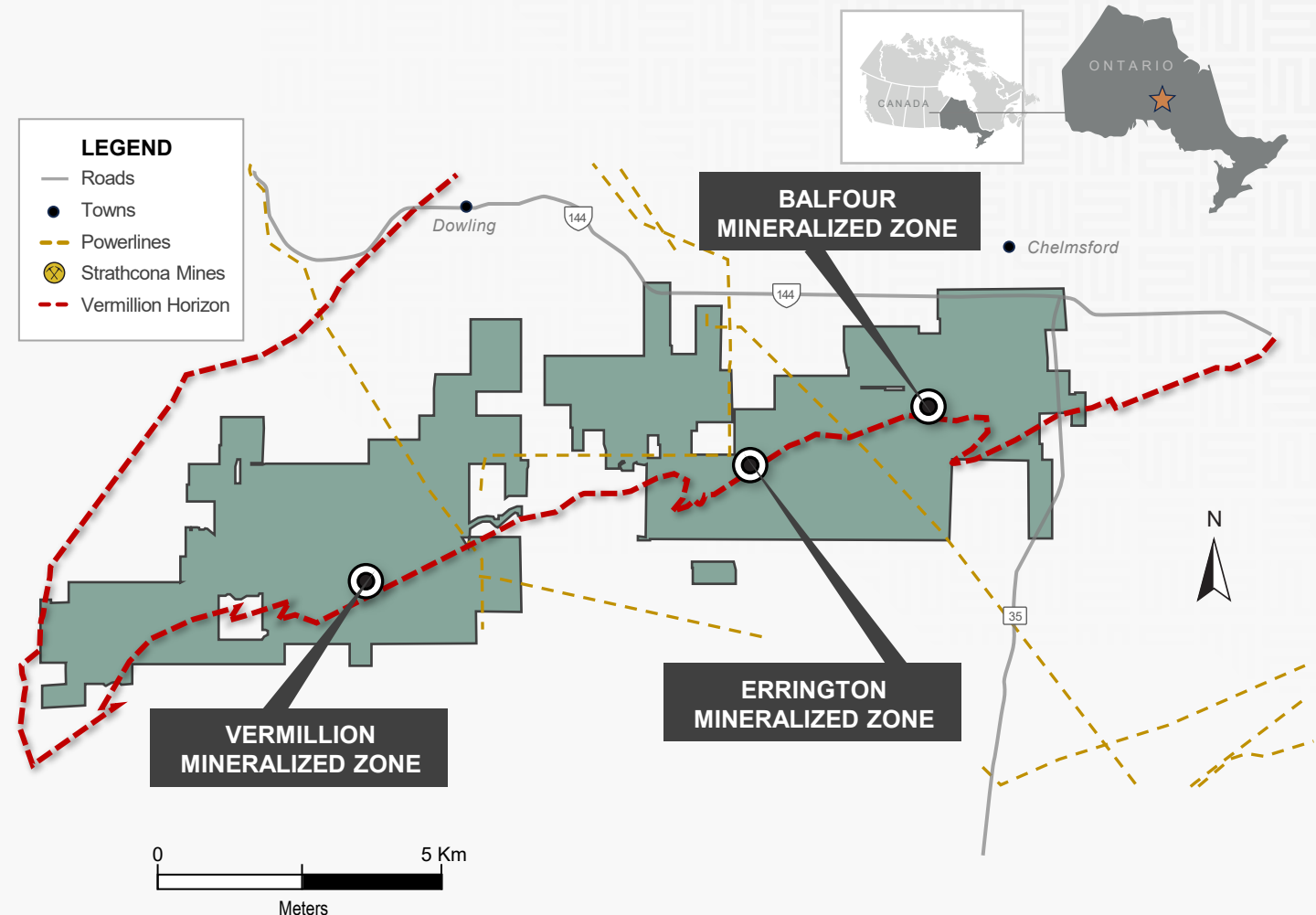
Each centre is open for expansion

Additional Targets

Several additional target areas have yet to be tested with drilling.

Active Drilling

Actively drilling, targeting shallow, high-grade Zinc-Copper-Silver-Gold



Please see Disclaimer for notes and forward-looking statements

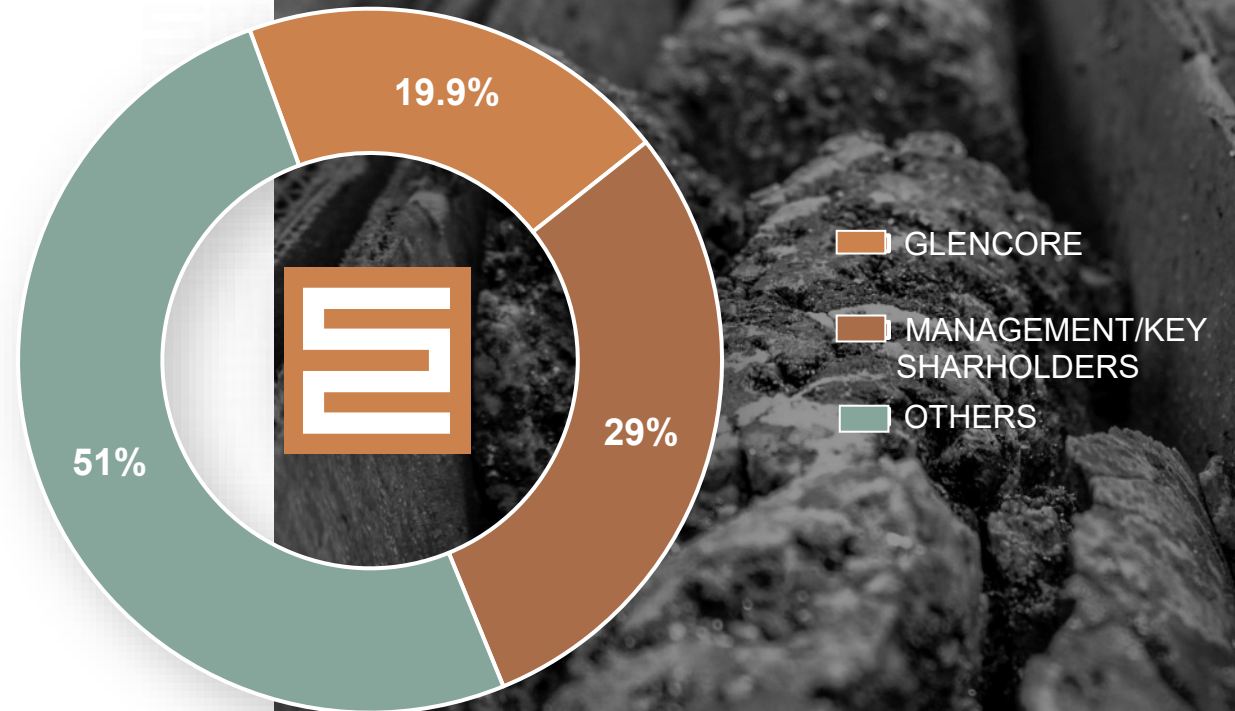


Capital Structure

CAPITALIZATION TABLE

Shares Outstanding	46,423,100 ¹
Options	3,110,000 ¹
Warrants	0
Fully Diluted	49,933,100 ¹
Cash(CAD)	~\$13M ²

1. See Errington Metals Corp Form 3D2 Filing Statement on Sedar as at March 31, 2026
2. Approximate as at first day of trading – unaudited





Seasoned Management Team

MATTHEW GOLLAT

President & CEO, Director

+18 years of experience building value in the mining sector. Co-founder and Executive Vice President of i-80 Gold Corp and key member of the Premier Gold Mines team that acquired and advanced the Greenstone Gold Mine project and was ultimately acquired by Equinox Gold. Significant M&A experience having been a founding member of Premier Royalties (acquired by Sandstorm) and formerly board member of Nomad Royalties (also sold to Sandstorm Royalties).

Matt holds a HBComm from Lakehead University and a Certificate of Mining Studies from University of British Columbia.

FRANK SANTAGUIDA (PGO)

Vice-President, Exploration

PhD Geoscientist with +30 years of industry and research experience, most recently as a Senior Geologist at Glencore. Frank has worked internationally in a wide range of geological settings, focused on exploration for base and precious metal deposits. He has implemented and designed exploration programs for VMS style mineralization at the Kidd Creek mining district as well as throughout Ontario and Quebec. For the past +10 years, his role with both Glencore and First Quantum Minerals Ltd. was to identify new opportunities for exploration projects worldwide; specifically, those with high potential for zinc-copper and nickel-copper world class

ROBERT SEDGEMORE

Metallurgical Consultant & Technical Advisor

Mr. Robert Sedgemore is a senior mining executive with over 25 years of international experience in project development, engineering, and operations across base, precious, and critical metals. He brings deep technical and execution expertise to de-risk and advance the company's VMS assets toward production having previously led large-scale mining projects from feasibility through construction and production, including multi-billion-dollar assets such as Escondida, Tintaya, Mirabela Nickel, and CalEnergy. Robert has held senior roles with BHP, Placer Dome, DRA Global, Metso-Outotec, and served as Principal Mining Specialist at the IFC (World Bank Group).

GAVIN NELSON

Chief Financial Officer

Gavin Nelson is a CPA with over 18 years of progressive experience spanning public practice, capital markets, and corporate financial reporting. He has served as a senior executive for multiple reporting issuers, overseeing the full finance function, corporate strategy, and day-to-day accounting operations across both public and private enterprises.

He is currently the President of Halstone Corporate Services and previously CFO of several other reporting issuers.

Gavin holds a Bachelor of Administrative and Commercial Studies (Finance), with a minor in Political Science, from the University of Western Ontario, and is a member in good standing of the Chartered Professional Accountants of Ontario



Directors & Advisors

DIRECTORS

Jens Mayer

Chair of the board

Principal at INFOR Financial with 30+ years as a mining investment banker. Former Head of Investment Banking at Canaccord Capital, helping build it into Canada's largest independent bank. Geologist by training, with an MBA from Queen's University.

Steven Filipovic

Director

Chartered Professional Accountant with 24+ years of financial leadership. CFO of Nuvau Minerals and formerly CFO of Premier Gold Mines, where he led the transition from explorer to producer and sale. ICD.D designated director.

Don Duval

Director

20+ years leading and transforming organizations globally. Head of Mining at Evok Innovations; former CEO of NORCAT, the world's leading mining innovation hub. ICD.D designated, with degrees from MIT and University of Toronto.

Rono Sinha

Director – Glencore Appointee

Mining finance and technology executive with 20+ years at Glencore, leading audit, risk, FP&A, controllership, and IT. Specializes in integrating financial controls with scalable technology to drive performance and mitigate enterprise risk.

ADVISORS

David Harquail

Strategic Advisor

Chair of Franco-Nevada Corporation and former CEO for 13+ years. Director of the Bank of Montreal and major benefactor of the Harquail School of Earth Sciences. Inducted into the Canadian Mining Hall of Fame in 2026.

Daniel Myerson

Strategic Advisor

Mining entrepreneur and company builder. Deputy Chairman of Eldorado Gold; former CEO of Foran Mining, where he led its transformation from discovery to near-production and positioned it as a leader in sustainable mining.



Sudbury Basin Project

VMS In The Heart of the Sudbury Camp

- The Sudbury Basin mineralized centres are located in the heart of the world-renowned Sudbury Mining District, in Ontario
- Extensive property position, private land
- Near-surface mineralized centres (3) occur over a strike length of 12.5 km

Historic Resources Completed by Glencore

ERRINGTON^{1,2}

8.9MT @ 1.13% Cu, 4.01% Zn, 1.09% Pb, 0.82 g/t Au & 52.0 g/t Ag

VERMILLION^{1,2}

3.2MT @ 1.31% Cu, 4.36% Zn, 1.17% Pb, 0.94 g/t Au & 53.0 g/t Ag

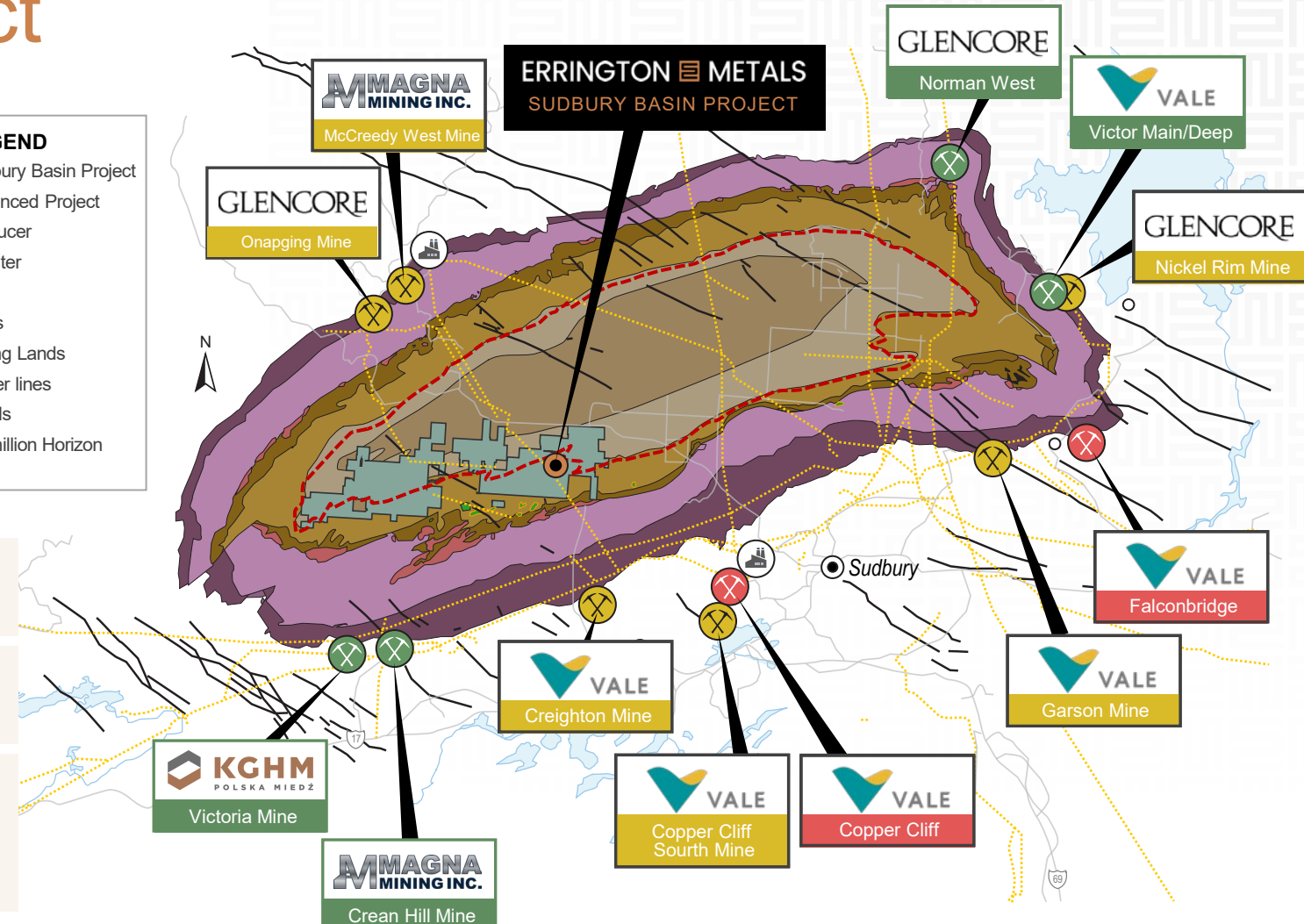
BALFOUR

Identified high priority target area but not reported in the historic Glencore resource (similar grades previously drilled).

Primary drill target of 2025/2026 drilling⁽¹⁷⁾ campaign

LEGEND

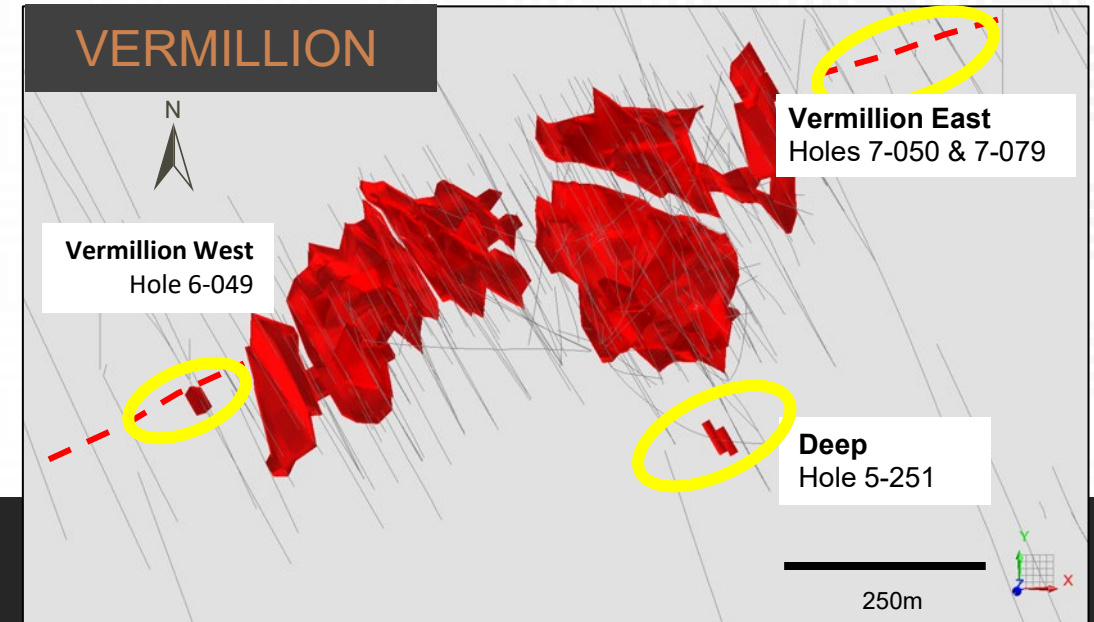
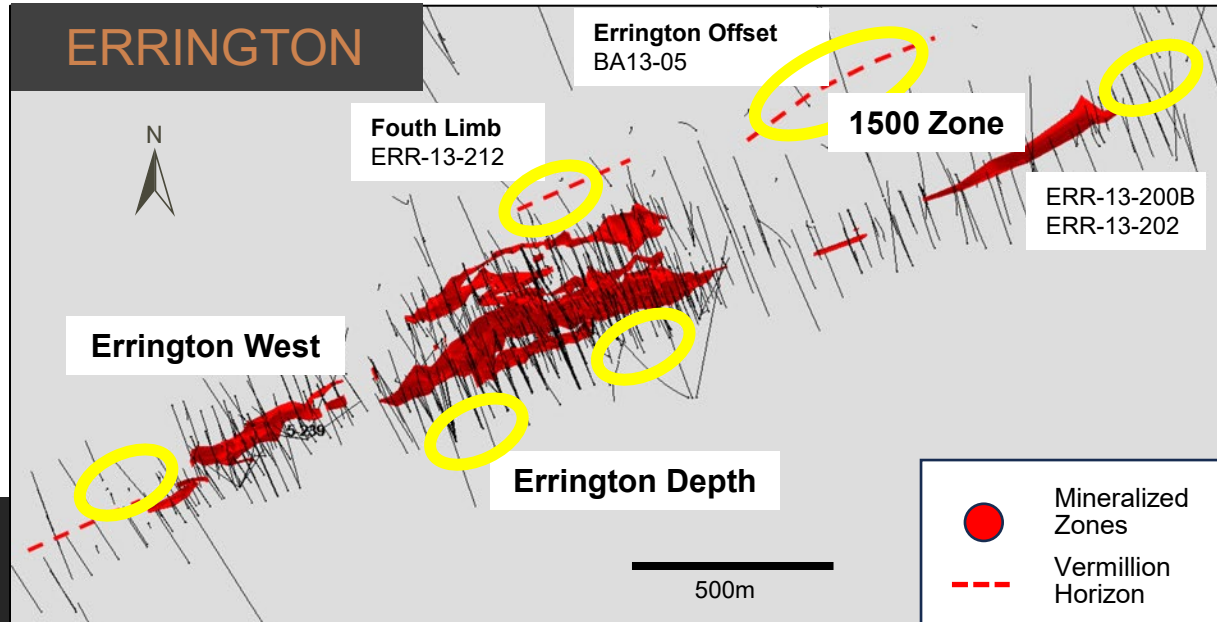
- Sudbury Basin Project
- ⊗ Advanced Project
- ⊗ Producer
- ⊗ Smelter
- ⊗ Mills
- ⊗ Cities
- ▭ Mining Lands
- ⋯ Power lines
- Roads
- - - Vermillion Horizon



1. technical report filed on Sedar entitled "Technical Report – Sudbury Basin Project" dated April 2, 2026 (with an effective date of December 31, 2026)
 2. The historical estimates contained in this presentation have not been verified as current mineral resources. A "qualified person" (as defined in NI 43-101) has not done sufficient work to classify the historical estimate as current mineral resources or mineral reserves, and the Company is not treating the historical estimate as current mineral resources or mineral reserves. Please see Disclaimer for notes and forward-looking statements



Resource Development Targets



Errington (largest currently known centre)

- Errington West open along strike with intercepts outside of centre boundaries
- 1500 Zone potential connection to main zone & open eastward:
 - ERR-13-202: 2.8m @ 5.89% Zn, 2.65% Pb, 3.50% Cu, 171.7 gpt Ag, 0.66 gpt Au
 - ERR-13-200B: 10.6m @ 3.74% Zn, 1.96% Pb, 0.52% Cu, 64.9 gpt Ag, 0.43 gpt Au
- Horizon offset interpreted from geophysical data and from isolated drill holes
 - BA13-05: 0.6m from 175.2m @ 6.7 gpt Au
- Intercept to north may represent another folded limb:
 - ERR-13-212: 6.3m from 239m @ 3.1% Zn, 80.4 gpt Ag, 1.35 gpt Au

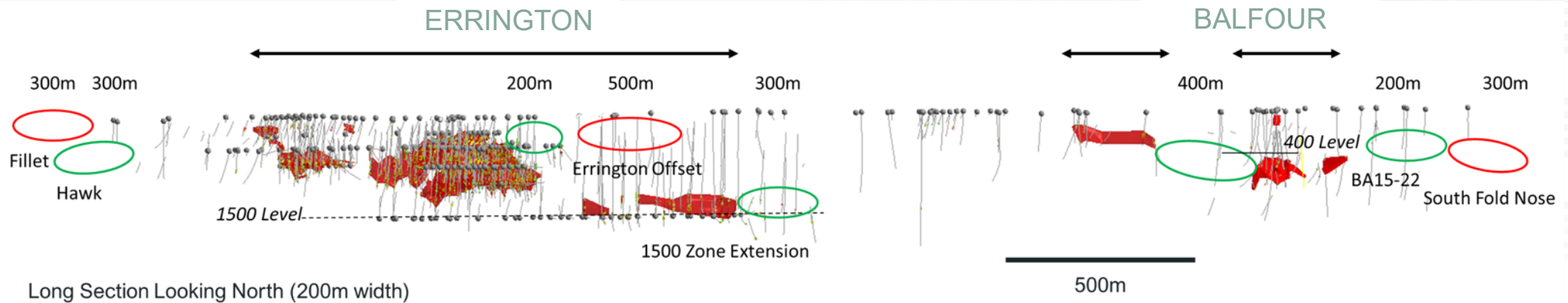
Vermillion

- Mineralization to west along strike with wide spaced drilling
 - Hole 6-049 12.4m @ 2.35% Zn, 0.55% Pb, 0.83% Cu, 16.1 gpt Ag, 0.47 gpt Au
- Mineralization to east with sparse drilling
 - Hole 7-050 26.4m @ 2.35% Zn, 0.40% Pb, 0.28% Cu, 33.8 gpt Ag, 1.96 gpt Au
 - Hole 7-079 12.25m @ 3.49% Zn, 1.00% Pb, 0.20% Cu, 44.1 gpt Ag, 0.96 gpt Au
- Deposit remains wide open at depth; deep intercepts without follow-up
 - Hole 5-251 5.6m @ 6.0% Zn, 0.3% Cu, 53 gpt Ag, 0.81 gpt Au

Please see Disclaimer for notes and forward-looking statements
See Appendix for full drill results



Balfour & Errington Exploration



- Balfour as discrete zones of mineralization 3 km east of Errington along same horizon
- Depth potential at Errington is untested – majority of drilling across the property is limited primarily to depths of less than 300m
- Brownfield targets exist where previous drill intersections remain without follow-up
- Greenfield targets exists where geophysical data are interpreted to show "blind" horizon
- Over 2.5km strike length of horizon untested

1. Mineralized zones boundaries reflect a Zinc-equivalent formula ($Zn\% + 4.75 \cdot Cu\% + 0.45 \cdot Pb\% + 0.06 \text{ Ag gpt} + 3.11 \text{ Au gpt}$) from historic assay results. The formula used a composite average of metal prices 2010-2013.

2. Intervals of assay results shown are drilling widths. Holes are typically orthogonal to structural dip so intervals reflect 70-100% of true widths.

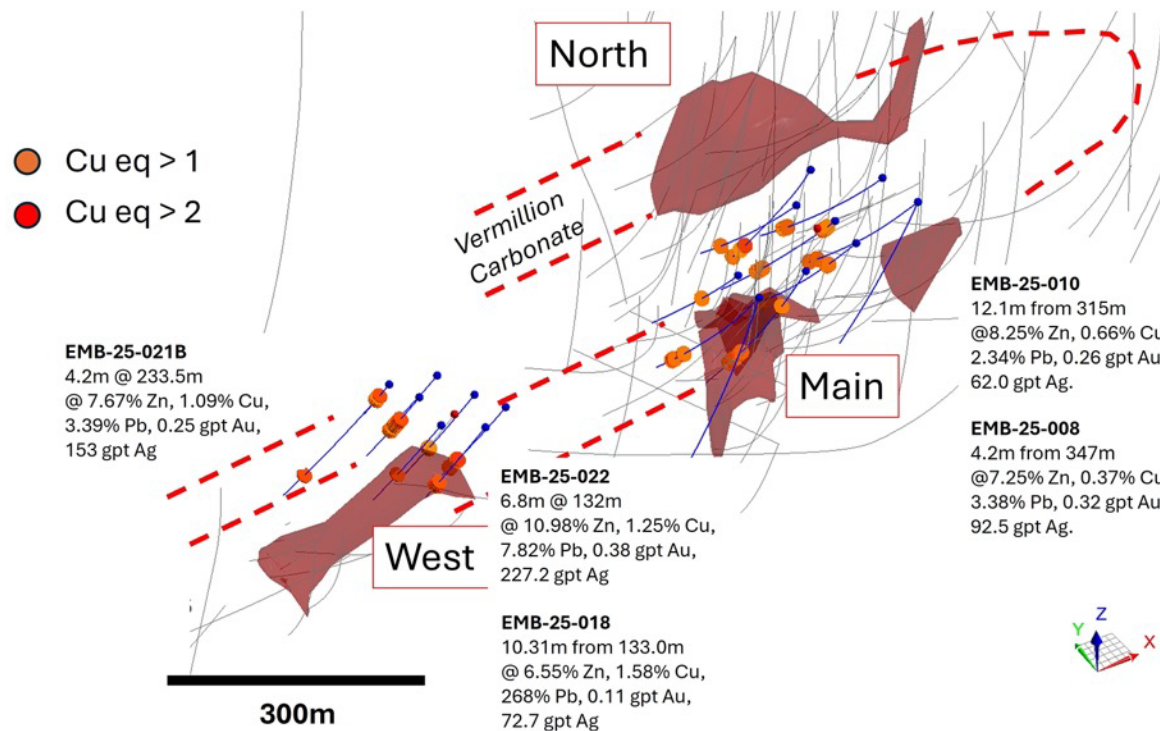
3. Historic assay results from 2011 to 2013 have been reviewed by an independent Qualified Person as defined by Canadian NI43-101 Standards and deemed acceptable for Quality Assurance and Quality Control for sampling practices, reproducibility and laboratory assay data. Results from the 2011 to 2013 exploration program are deemed sufficient for data QAQC prior to this period.

Please see Disclaimer for notes and forward-looking statements



Balfour Zone 2025 Drill Program

Balfour Mineralized Zones – 2025 Drill Results



BALFOUR ZONE

Primary Target of Phase 1 Drilling Program

- Identified high priority target area but not reported in the historic Glencore resource providing significant upside
- Multiple zones (West / Main / East / North) – all open for expansion

Initial drilling by Errington has realized numerous successes:

- Established continuity and expansion of the Main Zone along strike to east and updip
- Expansion of West Zone toward east and downdip
- Discovered high-grade mineralization in a parallel target (EMB-25-021B)

1. Mineralized zones boundaries reflect a Zinc-equivalent formula ($Zn\% + 4.75 * Cu\% + 0.45 * Pb\% + 0.06 \text{ Ag gpt} + 3.11 \text{ Au gpt}$) from historic assay results. The formula used a composite average of metal prices 2010-2013.

2. Intervals of assay results shown are drilling widths. Holes are typically orthogonal to structural dip so intervals reflect 70-100% of true widths.

3. Historic assay results from 2011 to 2013 have been reviewed by an independent Qualified Person as defined by Canadian NI43-101 Standards and deemed acceptable for Quality Assurance and Quality Control for sampling practices, reproducibility and laboratory assay data. Results from the 2011 to 2013 exploration program are deemed sufficient for data QA/QC prior to this period.

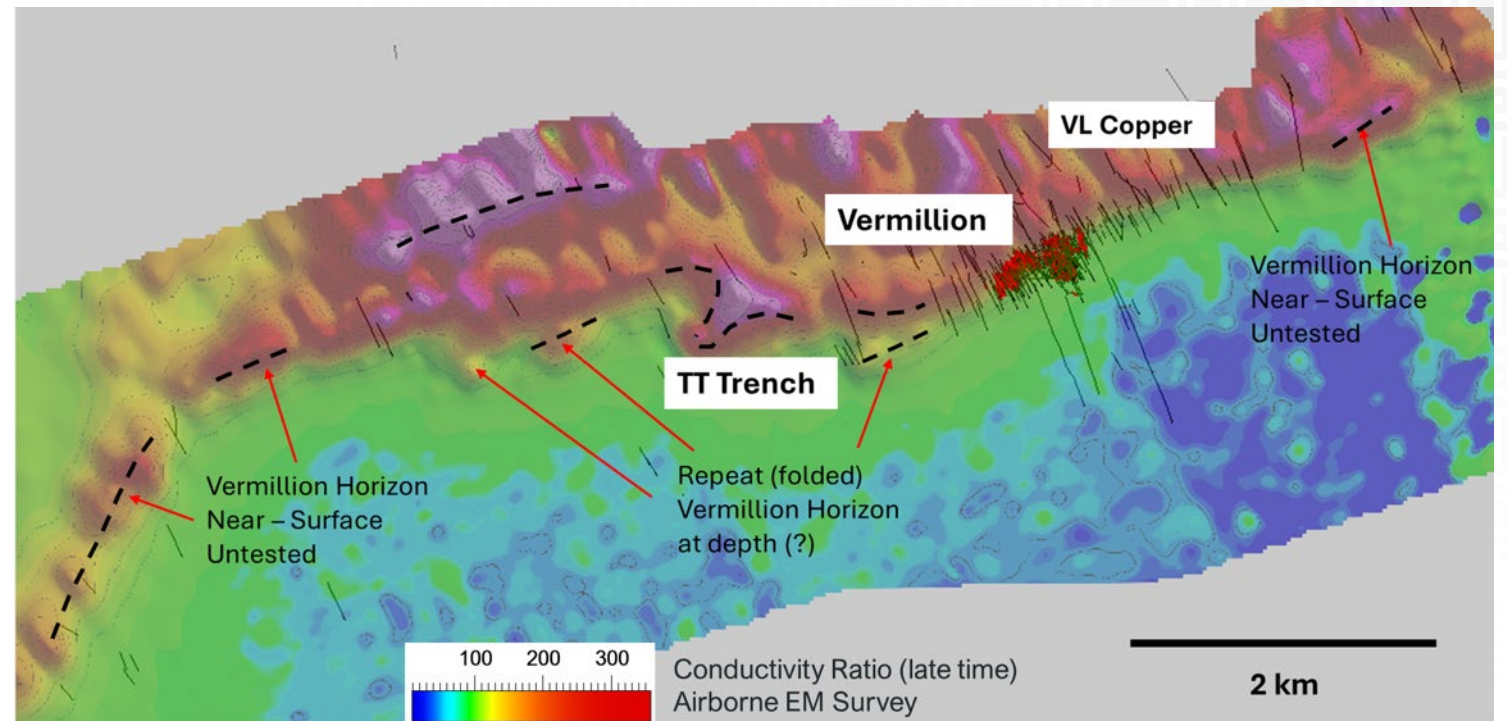
Please see Disclaimer for notes and forward-looking statements and Appendix for full drill results



Vermillion Exploration

Small Footprint, Big Potential

- Mineralization identified away from Vermillion without follow-up
 - VL Copper (VL-063 - 20m from 120m @ 2.1% Cu, 1.61% Zn)
 - TT Trench – exposed Vermillion Horizon with Zn and Cu mineralization
- Airborne geophysics: extremely effective tool for base metal exploration. Vermillion Horizon mapped by discrete conductivity, gravity and magnetic signatures
- Numerous anomalies have been identified at Vermillion; priority targets will be tested in 2026



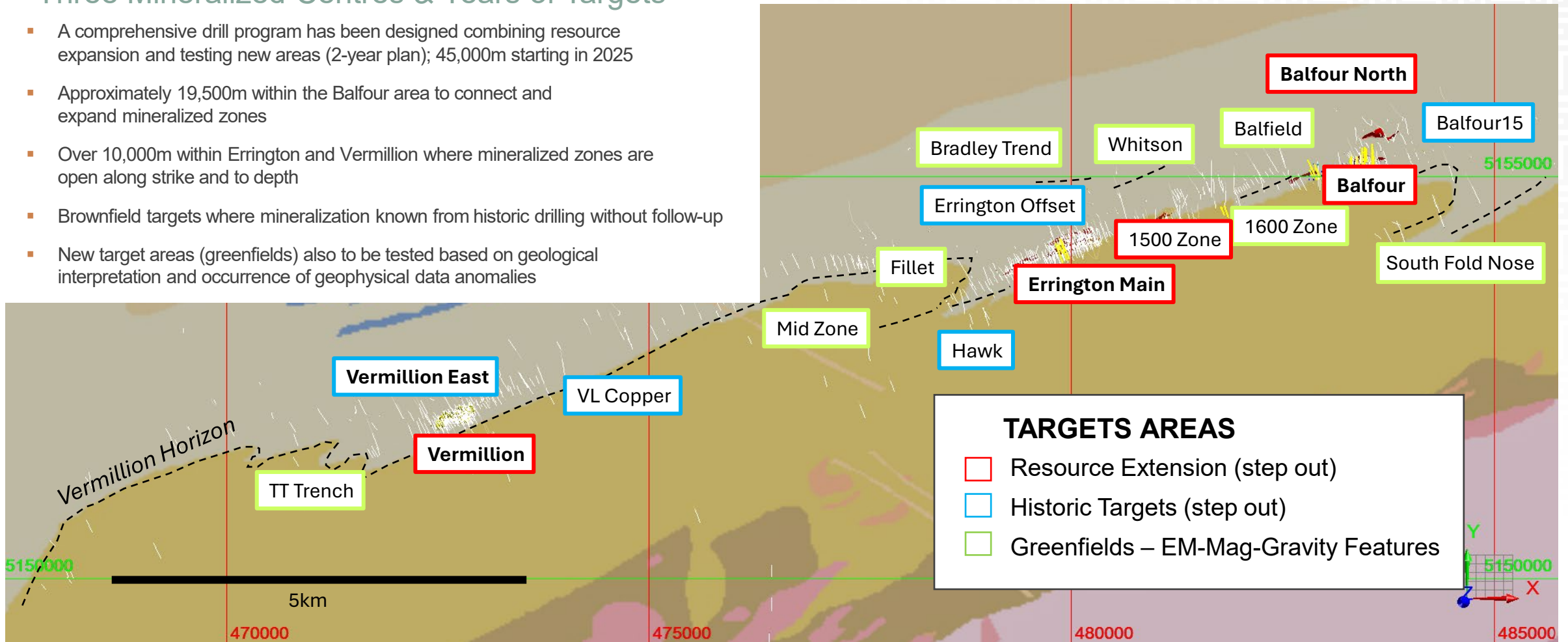
Please see Disclaimer for notes and forward-looking statements and Appendix for full drill results



Property Wide Exploration

Three Mineralized Centres & Years of Targets

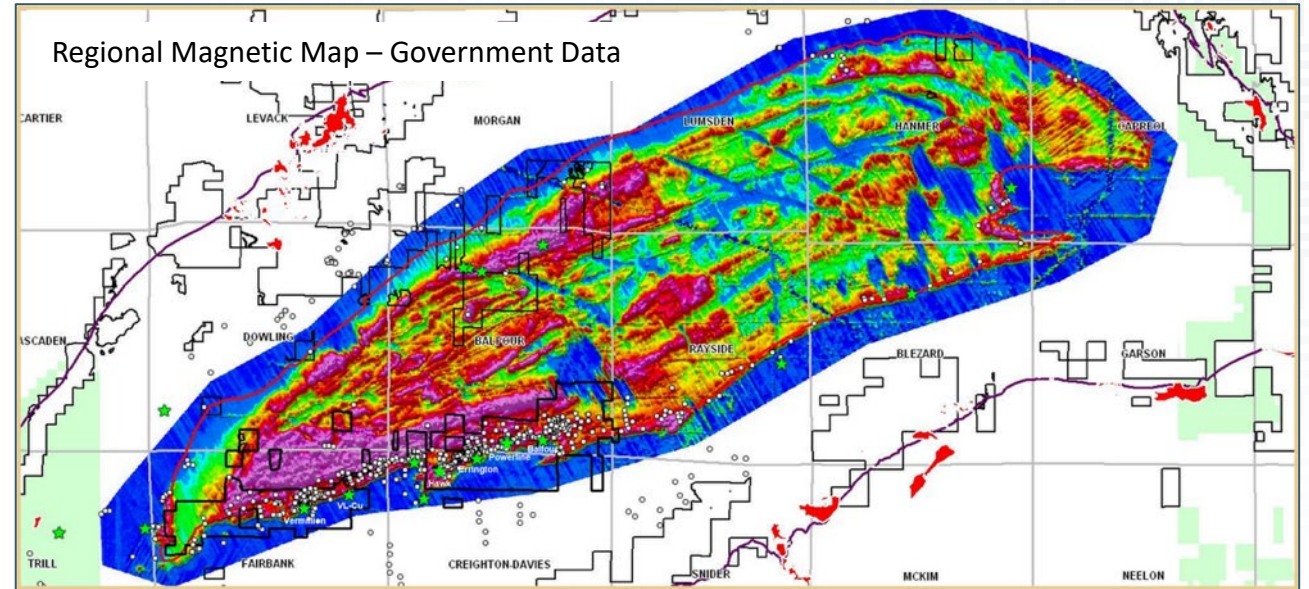
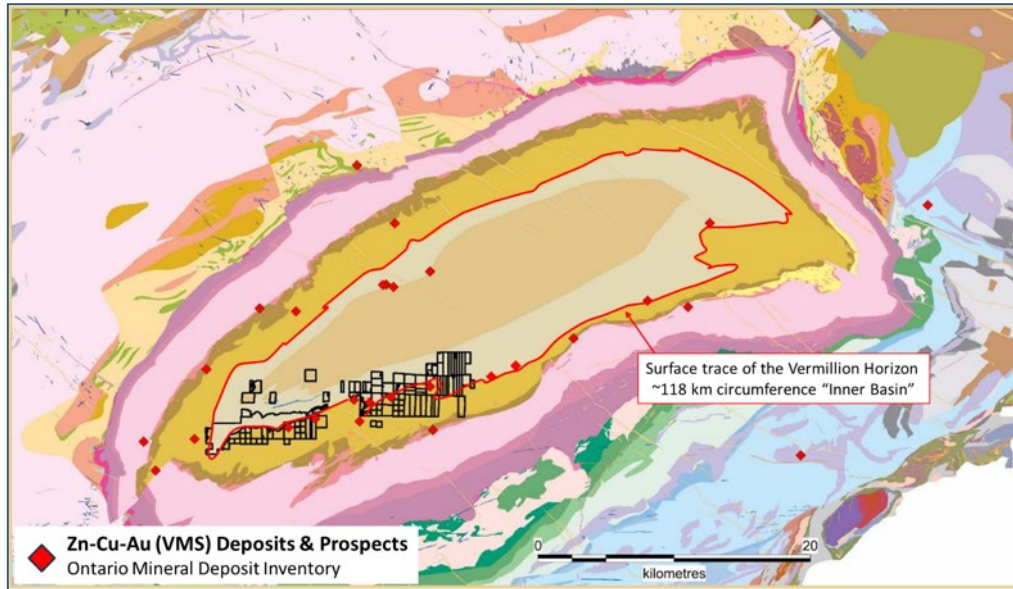
- A comprehensive drill program has been designed combining resource expansion and testing new areas (2-year plan); 45,000m starting in 2025
- Approximately 19,500m within the Balfour area to connect and expand mineralized zones
- Over 10,000m within Errington and Vermillion where mineralized zones are open along strike and to depth
- Brownfield targets where mineralization known from historic drilling without follow-up
- New target areas (greenfields) also to be tested based on geological interpretation and occurrence of geophysical data anomalies



Please see Disclaimer for notes and forward-looking statements



Basin-Wide Opportunity



- Sudbury Ni-Cu-PGE occur along the margin of preserved impact crater
- Volcanic and sedimentary rocks infill the central basin - VMS deposits form along the contact - The “Inner Basin”
- Contact strike extent has a circumference of ~118 km from surface to an estimated depth of ~4,500 ft (1,500 m)
- Errington, Vermillion and Balfour have only been drilled to depths of ~300m
- Only limited drilling along contact outside of Errington, Vermillion and Balfour
- Known surface prospects demonstrate high potential for other deposits
- Geophysical surveys have identified numerous areas with high mineral potential that remain untested

Please see Disclaimer for notes and forward-looking statements



Go Forward Plan

In 2026 We Will Achieve



Resource Development

+45,000 metre drill program focused on resource development plus testing high priority target areas



File Technical Report

File NI 43-101 technical report of historic work for listing



Initial MRE

Complete initial MRE following the current drill campaign



Secure Key Members

Secure key members of management team & board



Advance Metallurgy

Advance metallurgical test work to gain an early understanding of processing and recoveries



Environmental Work

Commence baseline environmental work

Please see Disclaimer for notes and forward-looking statements



Final Takeaways

Metal-rich VMS Deposits

Precious metal-rich VMS deposits with attractive upside

World-class Mining Jurisdiction

World-class mining jurisdiction – road access – skilled workforce

Proven Team

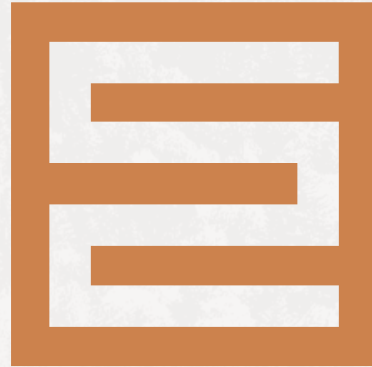
Proven management team

Deep Value

New company providing deep value vs peer group

Strong Partnerships

Partnership with Glencore and other supportive shareholders



ERRINGTON METALS

Contact Us

www.erringtonmetals.com

info@erringtonmetals.com

Toll Free: 1-888-279-1157

Local: 1-807-577-5785

717B Hewitson St, Thunder Bay,
ON P7B 6B5



ERRINGTON METALS

APPENDIX

erringtonmetals.com





Appendix – Historic Drill Results

Hole-ID	Easting	Northing	Elevation	Depth_m	Projection	Dip_deg	Azimuth_deg
5-252	479712.1	5153953	133.43	149.96	NAD83Z17	80	343.5
6-049	472414.8	5151899	93.29	37.8	NAD83Z17	-50	151
7-050	473044.5	5152210	48.15	110.34	NAD83Z17	-80	148
VL-063	473560.9	5152363	256	379.79	NAD83Z17	-50	330
BA13-05	480536.9	5154534	263	402.01	NAD83Z17	-87	340
ERR-13-200B	481324.2	5154337	280.99	554.01	NAD83Z17	-71.6	347.6
ERR-13-202	481402.8	5154412	279.21	500.71	NAD83Z17	-65.3	344.7
ERR-13-212	480220.2	5154415	263.1	342.01	NAD83Z17	-88.8	277.4

HOLE-ID	FROM_m	TO_m	Au_GPT	Ag_GPT	Cu_PCT	Pb_PCT	Zn_PCT
BA13-05	175.2	176.6	6.7	0.238	1.78	3.89	
ERR-13-200B	471.5	472.5	0.151	77.8	1.07	2.03	0.18
ERR-13-200B	472.5	473.1	0.246	207	0.548	11.9	7.44
ERR-13-200B	473.1	473.9	0.357	207	2.94	3.98	5.15
ERR-13-200B	473.9	475	0.454	45.2	0.213	0.712	1.98
ERR-13-200B	475	475.7	0.289	39.7	0.261	1.12	3.44
ERR-13-200B	475.7	476.6	0.174	20.3	0.208	0.428	1.36
ERR-13-200B	476.6	477.1	0.084	7.2	0.045	0.157	0.437
ERR-13-200B	477.1	477.6	0.711	56.2	0.08	1.6	6.87
ERR-13-200B	477.6	477.9	0.568	30.6	0.319	0.539	1.49
ERR-13-200B	477.9	478.3	1.2	47	0.289	0.873	4.7
ERR-13-200B	478.3	479	1.15	57.5	0.509	0.936	3.13
ERR-13-200B	479	479.9	0.41	3.9	0.156	0.39	1.44
ERR-13-200B	479.9	480.3	0.57	151	0.091	6.09	17.5
ERR-13-200B	480.3	481	0.307	33.6	0.077	1.13	3.57
ERR-13-200B	481	481.6	0.355	33.9	0.075	1.1	6.26
ERR-13-200B	481.6	482.1	0.587	33.6	0.452	0.506	4.65
ERR-13-202	452.4	453	0.496	111	2.89	2.2	4.25
ERR-13-202	453	453.4	0.733	216	4.94	4.25	5.82
ERR-13-202	453.4	453.9	1.28	214	1.93	4.38	21.4
ERR-13-202	453.9	454.2	0.378	143	2.34	1.57	0.881
ERR-13-202	454.2	454.7	0.573	197	6.19	2.23	0.855
ERR-13-202	454.7	455.2	0.441	159	2.65	1.22	0.481
ERR-13-212	239.2	240	1.71	143	0.129	0.298	1.45
ERR-13-212	240	241	3.06	191	0.207	0.552	9.58
ERR-13-212	241	241.7	1.88	105	0.206	0.585	7.05
ERR-13-212	241.7	242.7	1.04	33.6	0.027	0.165	1.14
ERR-13-212	242.7	244	0.14	32.3	0.01	0.247	0.511
ERR-13-212	244	245.5	1.02	34.6	0.032	0.187	1.27

HOLE-ID	FROM_m	TO_m	Au_GPT	Ag_GPT	Cu_PCT	Pb_PCT	Zn_PCT
6-049	14.33	14.84	0.05	10.63	1.27	0.1	0.36
6-049	14.84	16.76	0.05	2.4	0.45	0	0
6-049	16.76	18.29	0.51	22.63	3.49	0.1	0.01
6-049	18.29	19.81	1.03	40.46	1.75	0.1	4.2
6-049	19.81	22.13	1.2	25.37	0.34	0.58	4.97
6-049	22.13	23.13	0.05	4.8	0.01	0.12	0.78
6-049	25.66	26.73	0.51	28.11	0.03	4.65	10.72
7-050	7.44	9.14	0.51	49.36	0.26	1.05	4.91
7-050	9.14	10.52	0.51	46.28	0.47	1.31	11.32
7-050	10.52	12.5	0.17	6.17	0.08	0.01	0.01
7-050	12.5	14.02	1.03	45.59	0.01	0.01	0.16
7-050	14.02	15.54	1.71	41.48	0.42	0.46	5.12
7-050	15.54	17.07	1.03	28.8	0.52	0.66	4.55
7-050	17.07	18.59	0.86	20.91	0.34	0.66	3.98
7-050	18.59	20.12	0.51	18.17	0.05	0.14	0.21
7-050	20.12	21.64	1.71	32.57	0.1	0.23	3.88
7-050	21.64	23.16	1.37	33.25	0.08	0.83	2.69
7-050	23.16	24.69	0.34	9.6	0.16	0.01	0.1
7-050	24.69	25.91	0.17	16.11	0.74	0.12	1.18
7-050	25.91	28.56	0.17	16.11	0.74	0.01	0.28
7-050	28.56	31.21	5.14	41.14	0.29	0.2	1.03
7-050	31.21	33.83	8.57	79.87	0.01	0.61	0.67
7-079	138.81	140.21	0.69	45.26	0.05	1.18	7.12
7-079	140.21	140.73	0.34	17.49	0.02	0.09	1.04
7-079	140.73	142.13	0.69	24.69	0.14	0.44	1.66
7-079	142.13	142.68	0.69	64.46	0.6	1.03	3.48
7-079	142.68	144.51	0.17	6.17	0.01	0.01	0.01
7-079	144.51	146.91	2.06	24.69	0.46	0	0.88
7-079	146.91	147.52	1.2	39.43	0.19	1.96	7.44
7-079	147.52	147.86	0.69	15.77	0.01	0.1	0.31
7-079	147.86	149.72	1.03	72.34	0.15	2.01	6.19
7-079	149.72	150.36	0.69	76.11	0.01	2.11	4.37
7-079	150.36	151.06	1.03	164.23	0.47	4.42	9.93
5-251	131.52	132.89	0.86	69.6	0.45	1.08	2.87
5-251	132.89	134.42	1.03	92.92	0.44	1.89	6.56
5-251	134.42	135.94	0.86	27.09	0.11	0.58	1.88
5-251	135.94	137.16	1.03	52.8	0.18	1.63	4.44
VL-063	120	125	0.02	1.02	2.58	0.11	0.91
VL-063	125	130	0.02	1.06	3.61	0.33	2.44
VL-063	130	135	0.02	1.04	2.45	0.16	4.35
VL-063	135	140	0.025	1.35	1.93	0.14	1.14

ASSAY VALUES

All historic assay results reported have been verified by an Independent Qualified Person, as defined by NI43-101. Assay certificates for data from pre-2011 were not retained, but sufficient spacing of drillholes from post 2011 demonstrate adequate reproducibility and confidence level of assay values. All intervals shown reflect downhole depth from collar locations. Locations of drill holes post 2011 have been validated by differential GPS instruments to within 20cm at surface. Locations of drill holes pre-2011 are derived from maps rectified by surface locations surveyed by differential GPS instruments. Locations of post-2011 drill holes on average less than 2m uncertainty.



Appendix – Balfour Drill Results

Hole-ID	Easting	Northing	Elevation	Depth_m	Projection	Dip_Deg	Azimuth_deg
EMB-25-008	483560	5155060	267	393	NAD83Z17	-50	360
EMB-25-010	483547	5155122	267	399	NAD83Z17	-50.48	0.7
EMB-25-018	482889	5154959	263	174	NAD83Z17	-59.91	335.61
EMB-25-021-B	482831	5155090	263	294	NAD83Z17	-60.15	334.61
EMB-25-022	482930	5154980	263	189	NAD83Z17	-60.14	335.3

Hole number	From_m	To_m	Cu_PCT	Zn_PCT	Pb_PCT	Au_GPT	Ag_GPT
EMB-25-008	346.56	347.41	0.62	12.7	5.9	169	100
EMB-25-008	347.41	348.36	0.787	15.05	8.07	206	100
EMB-25-008	348.36	349.52	0.203	4	1.05	34.3	34.3
EMB-25-008	349.52	350.73	0.0421	0.424	0.1635	5.3	5.3
EMB-25-010	315.12	316.09	0.616	8.21	4.46	0.458	93.1
EMB-25-010	316.09	317.14	4.83	17.35	8.2	0.455	290
EMB-25-010	317.14	318	0.353	12.8	5.32	0.268	106
EMB-25-010	318	319.02	0.233	15.2	5.5	0.653	113
EMB-25-010	319.02	320.09	0.136	2.28	1.29	0.934	33.2
EMB-25-010	320.09	321.12	0.0851	2.19	1.555	0.041	19.9
EMB-25-010	321.12	322.08	0.388	3.05	1.075	0.106	30.8
EMB-25-010	322.08	323.04	0.381	4.97	0.9	0.059	27.6
EMB-25-010	323.04	324	0.296	1.31	0.033	0.015	11.9
EMB-25-010	324	325.03	0.0835	0.1575	0.0278	0.007	3.8
EMB-25-010	325.03	326.12	0.1135	1.435	0.0819	0.024	6.2
EMB-25-010	326.12	327.19	0.263	0.623	0.0675	0.024	11.8
EMB-25-018	133.04	134.15	0.914	5.28	3.42	0.158	80.2
EMB-25-018	134.15	135.24	2.21	4.79	1.95	0.132	68.7
EMB-25-018	135.24	136.28	0.863	10.05	4.89	0.075	118
EMB-25-018	136.28	137.37	0.183	2.05	0.727	0.042	17.5
EMB-25-018	137.37	138.54	1.605	6.58	2.46	0.101	74.8
EMB-25-018	138.54	139.82	2.65	9.6	3.17	0.188	112
EMB-25-018	139.82	141	0.934	4.01	1.795	0.068	40.7
EMB-25-018	141	142.2	2.63	8.59	2.35	0.143	79
EMB-25-018	142.2	143.35	1.955	7.6	2.88	0.097	60.9
EMB-25-018	143.35	144.41	1.045	1.465	0.417	0.032	15.5
EMB-25-018	144.41	145.52	0.418	1.02	0.258	0.029	6.4
EMB-25-021-B	233.52	234.61	1.05	11.3	3.96	0.162	172
EMB-25-021-B	234.61	235.58	0.757	4.66	2.7	0.249	122
EMB-25-021-B	235.58	236.62	2.46	10.9	5.51	0.479	271
EMB-25-021-B	236.62	237.69	0.1035	3.56	1.36	0.133	47.2
EMB-25-022	132.47	133.46	1.5	2.09	3	0.146	96
EMB-25-022	133.46	134.45	0.834	12.1	6.7	0.52	289
EMB-25-022	134.45	135.55	1.375	18.35	10.05	0.587	270
EMB-25-022	135.55	136.56	1.78	7.78	14.55	0.412	293
EMB-25-022	136.56	137.53	0.574	13.8	7.09	0.333	204
EMB-25-022	137.53	138.47	2.07	13.45	6.99	0.357	280
EMB-25-022	138.47	139.24	0.471	8.05	6.22	0.248	134

ASSAY VALUES

Samples are collected using typical industry standards. Analytical methods used are four-acid digestion followed by ICP-MS and ICP-AES finish. Over-range limit for Zn, Cu, Pb, and S is 10,000ppm so, followed by an additional ICP-MS finish. Silver over-range limit is 100ppm and also followed by additional ICP-MS finish. Gold measured by fire assay of 30g nominal sample weight. Assay lab results have been verified via Certified Reference Standards, blanks and duplicates. All intervals shown are drill intervals and represent 75-100% of true width. Assay results have been validated by Frank Santaguida, Vice President Exploration who is a full-time employee of Errington Metals Inc and a Qualified Person as defined by NI43-101.